

INSPINIA T9SQ

9 Point Glass Keypad - Flush Mount



Metal Frame Options

● Silver



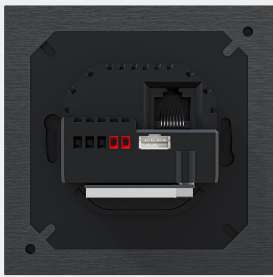
● Gold



● Black

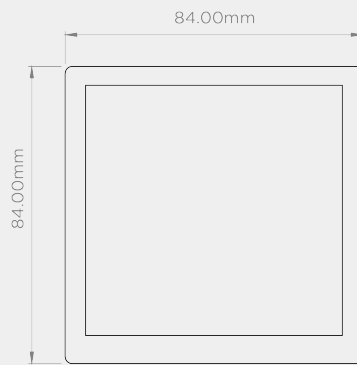
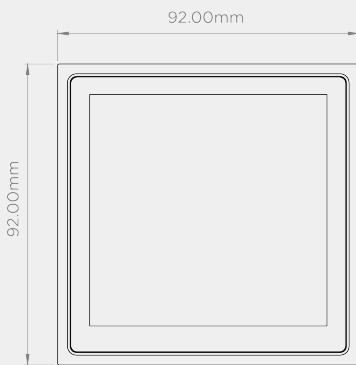


Product Side Views



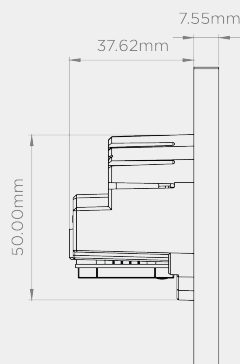
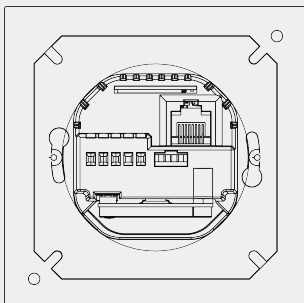
Product Dimensions

Front view with and without metal frame (mm)

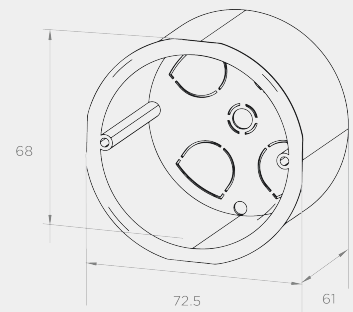


Required Back Box

Back and side view with metal frame (mm)



EU Standard 1G, Isometric view (mm)



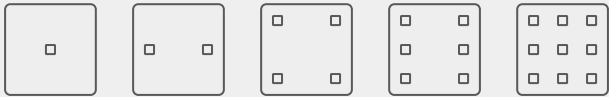
INSPINIA T9SQ

9 Point Glass Keypad - Flush Mount



BASED ON FRAMEWORK 

Product Specifications

Hardware :	ARM A7 Single-Core 1.2 GHz / 128MB DDR3 Ram / 512 MB Nand Flash OS Linux 3.4 with Inspinia Application up to 1000 BMS points Initial license: 100 BMS points / No HVAC (VRV/VRF) point
Touch Pad:	1 to 9 Capacitive Touch Points RGB LED's for each pad
Standard Artwork (Ref.):	1 Point (AIT-S1P) 2 Points (AIT-S2P) 4 Points (AIT-S4P) 6 Points (AIT-S6P) 9 Points (AIT-S9P) 
Power Supply:	24VDC -or- 48 VDC In POE IEEE 802.3af Power consumption max. 10W
Standard Interfaces:	(1x) LAN RJ45 10/100Mbps interface (1x) Add-On (optional interface) Port (1x) Digital Out (open collector 5V 100mA) (1x) Digital In
Built-in Sensors:	Humidity sensor range 0% up to 100% RH Temperature sensor range -40°C up to +125°C
Optional Interfaces (Ref.):	KNX Twisted Pair (A-KNX) Bticino (SCS) Twisted Pair (A-SCS) RS232 / RS485 two-in-one module (A-RSM) DALI 2 (A-DLI) Galvanic isolated RS485 Modbus (A-GMD) VRF mainline communication (A-VRM -or- A-VRR) BLE Bluetooth 5.0 (BCU-S24-BLT -or- BCU-POE-BLT) Zigbee 3.0 (BCU-S24-ZGB -or- BCU-POE-ZGB)
Working Temperature & Humidity:	-10°C – +60°C 5% – 90% at 25°C

